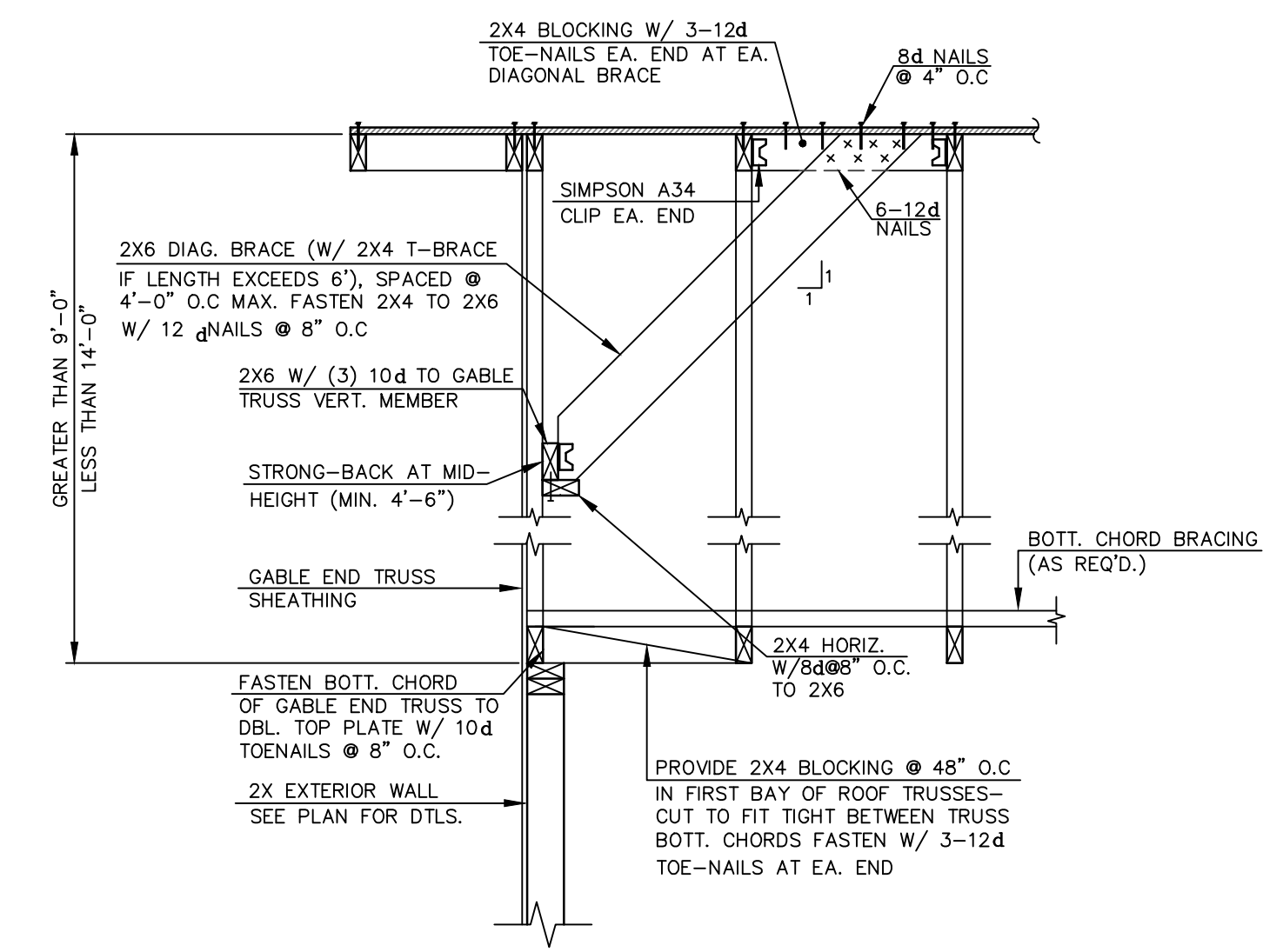


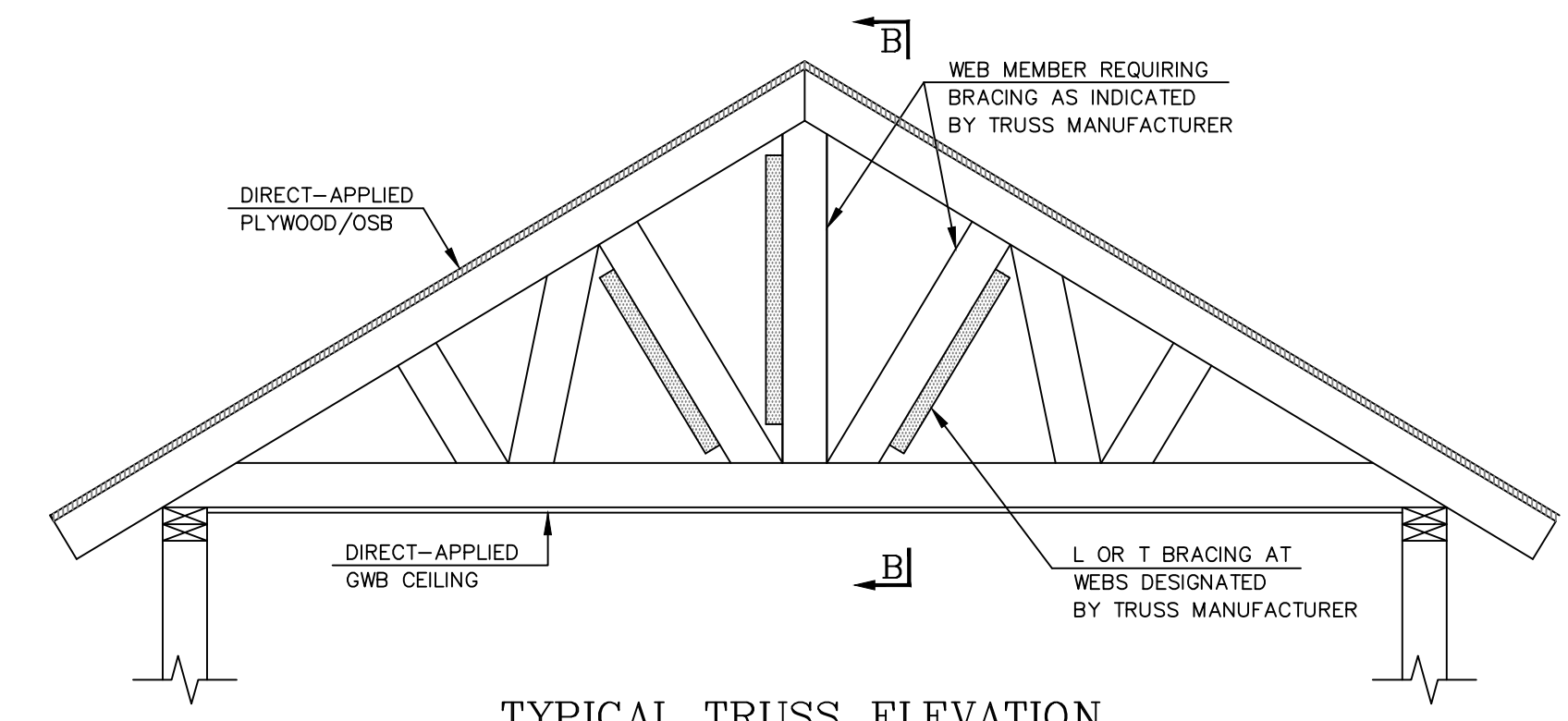
TYP. GABLE END BRACING DETAIL

BRACE GABLE END TRUSSES PER ABOVE DETAIL WHEN GABLE HEIGHT EXCEEDS 9'-0". "L" BRACES REQUIRED WHERE NOTED BY TRUSS MANUFACTURER.

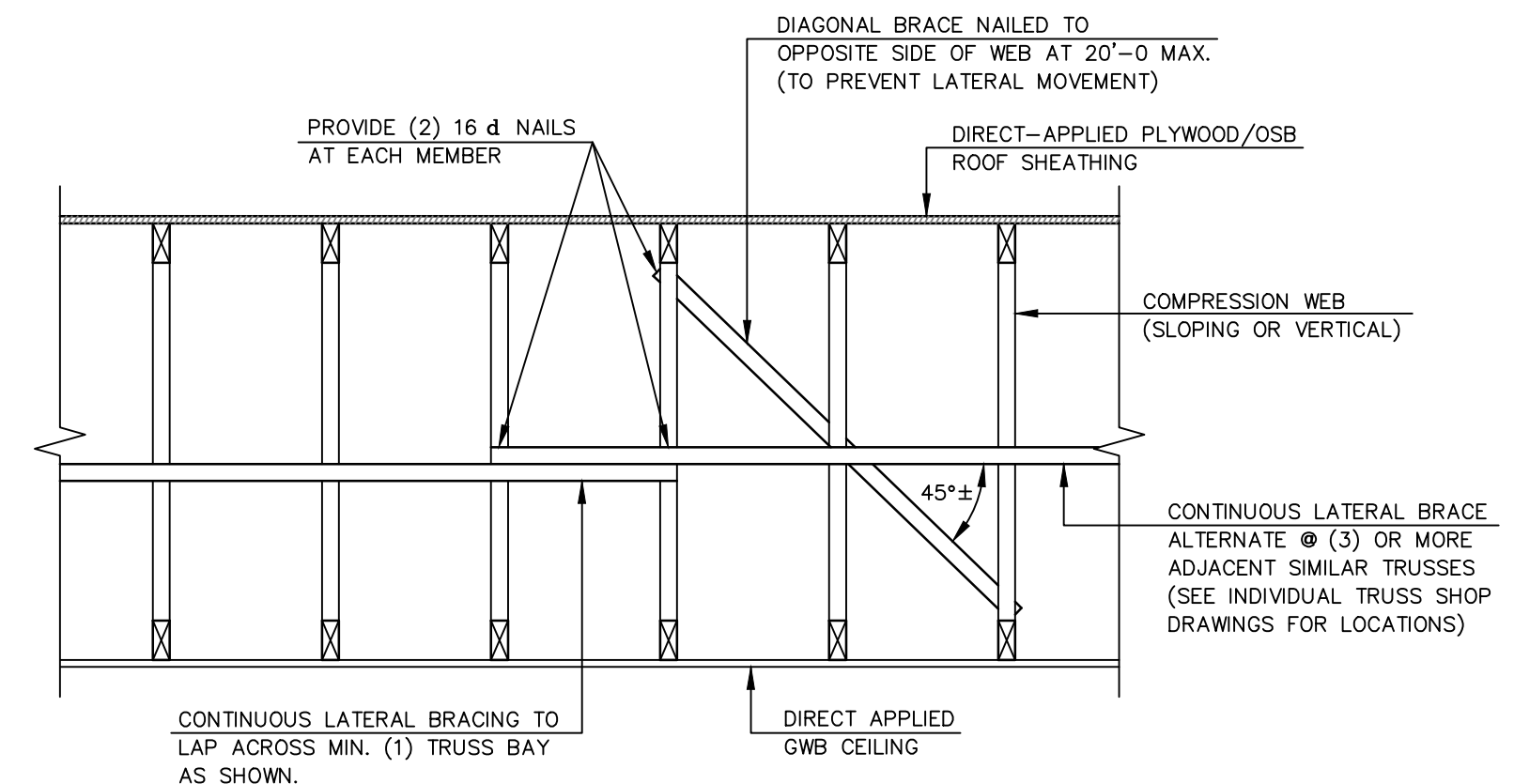


TYP. GABLE END BRACING DETAIL

BRACE GABLE END TRUSSES PER ABOVE DETAIL WHEN GABLE HEIGHT EXCEEDS 9'-0". "L" BRACES NOT REQ'D.

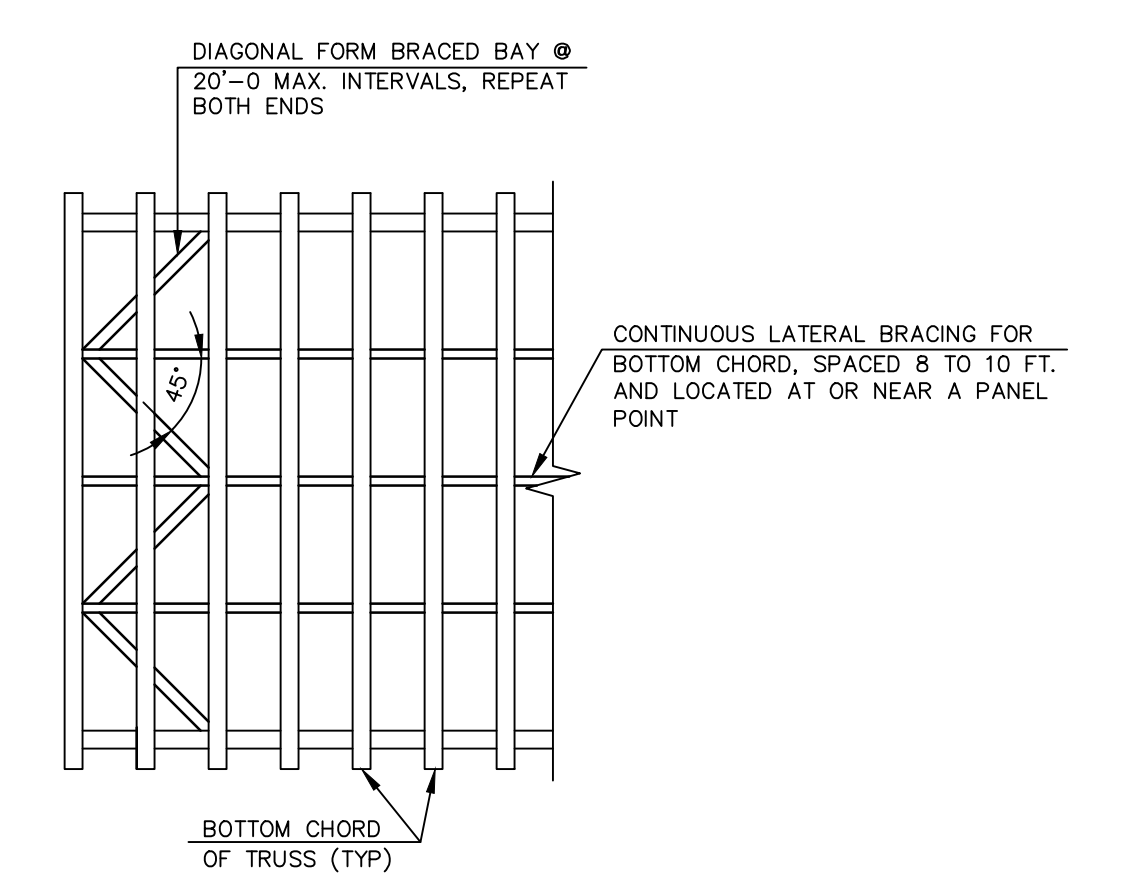


TYPICAL TRUSS ELEVATION



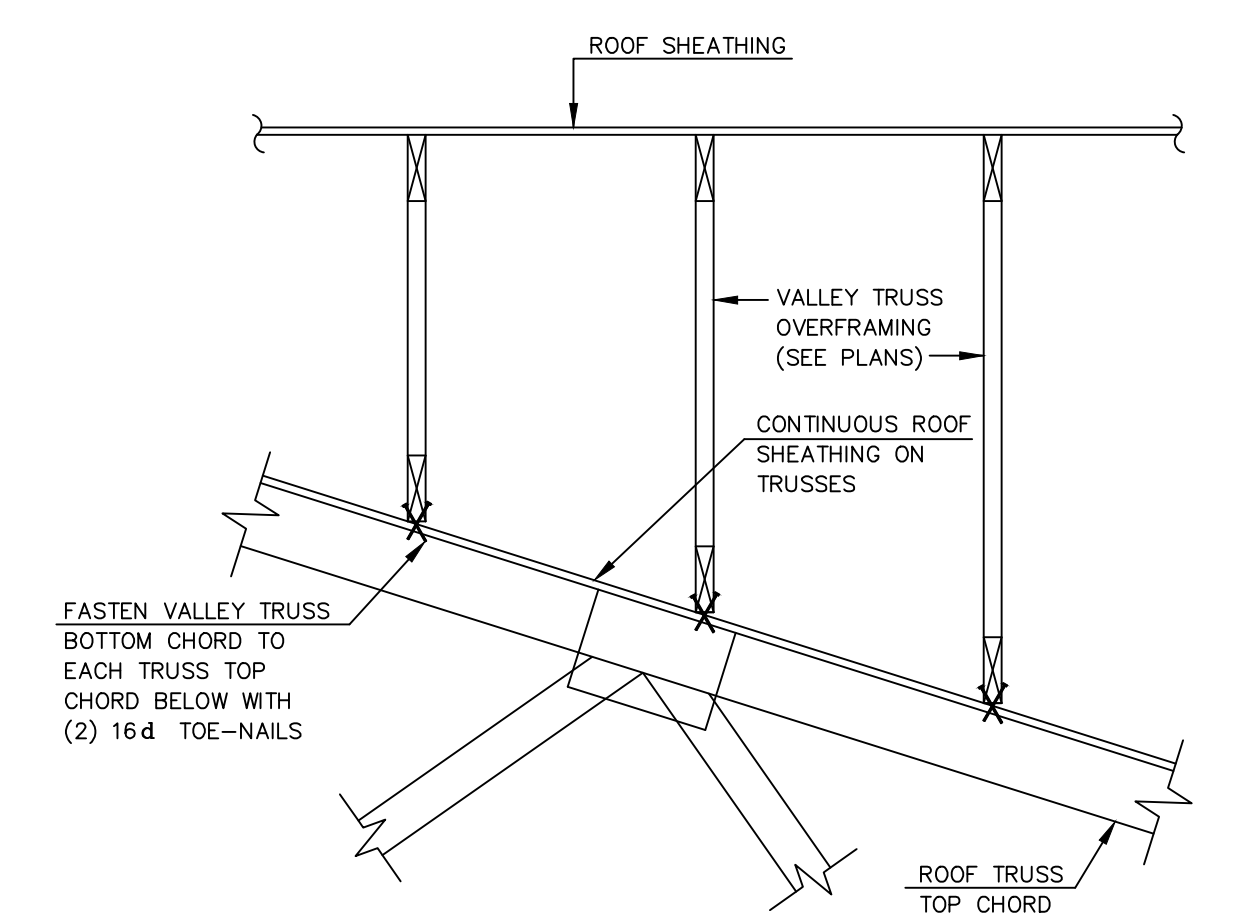
SECTION B-B

ALTERNATE METHOD WHERE (3) OR MORE SIMILAR TRUSSES ARE GROUPED



BOTTOM CHORD BRACING

CONTINUOUS LATERAL BRACING OPTION



TYPICAL CONNECTION OF VALLEY TRUSS OVERFRAMING

3/4" = 1'-0"

PERMANENT ROOF TRUSS BRACING NOTES:

- (ROOF TRUSSES SPACED NO MORE THAN 24" O.C.)
- WOOD TRUSSES SHALL BE BRACED AND ERECTED IN ACCORDANCE WITH THE BUILDING COMPONENT SAFETY INFORMATION (BCSI-B3) GUID TO GOOD PRACTICE FOR HANDLING, INSTALLING, RESTRAINING & BRACING OF METAL PLATE CONNECTED WOOD TRUSSES (2008 EDITION)
 - TOP CHORD BRACING:**
TOP CHORDS SHALL BE BRACED BY DIRECT-APPLIED PLYWOOD/OSB SHEATHING.
• IF SHEATHINGS NOT DIRECTLY APPLIED TO EITHER TOP CHORD OF TRUSS OR TO THE PURLINS FASTENED TOP CHORD, CONTACT LBA FOR BRACING DESIGN.
 - BOTTOM CHORD BRACING:**
THE BOTTOM CHORDS SHALL BE BRACED BY ATTACHING EITHER GYPSUM BOARD OR CONTINUOUS LATERAL BRACING SPACED AT 8 TO 10 FEET NAILED TO TOP OF THE BOTTOM CHORD. DIAGONALS PLACED AT 45° TO THE LATERAL BRACES SHALL BE LOCATED AT EACH END. IF THE BUILDING EXCEEDS 60 FEET IN LENGTH, DIAGONAL BRACING SHOULD BE REPEATED AT 20 FOOT INTERVALS.
 - WEB MEMBER BRACING:**
THE TRUSS MANUFACTURER SHALL INDICATE THE TRUSS MEMBERS (WEBS, VERTICAL) THAT REQUIRE LATERAL BRACING/RESTRAINT.
A. "T" OR "L" BRACE:
WHERE BRACING IS REQUIRED AS INDICATED ON SHOP DRAWING, UTILIZE "T" OR "L" BRACES (REFERENCE BCS-B3 FIGURES B3-22 & B3-23 IS ACCEPTABLE).
• "T" & "L" REINFORCING MATERIAL SHALL MATCH THE SIZE OF THE WEB/VERTICAL MEMBER.
• "T" & "L" REINFORCING TO BE A MINIMUM OF 90% OF THE LENGTH OF THE WEB/VERTICAL MEMBER.
• FASTEN "L" OR "T" REINFORCING TO WEB/VERTICAL WITH 16d NAILS (0.131x3/4") AT 6" O.C.
B. CONTINUOUS LATERAL BRACING ALTERNATE:
WHEN THREE (3) OR MORE SIMILARLY CONFIGURED ROOF TRUSSES ALIGN CONTINUOUS ROWS OF LATERAL BRACING MAY BE USED IN LIEU OF THE ABOVE NOTED "L" OR "T" BRACES.
• CONTINUOUS ROWS OF LATERAL BRACING SHALL CONSIST OF MINIMUM 2X4. ROWS SHALL BE LAP SPICED ONE TRUSS BEYOND IN EACH DIRECTION. SECURE BRACE TO EACH TRUSS COMPRESSION WEB WITH (2) 16d NAILS (0.131x3/4").
• CONTINUOUS LATERAL BRACING SHALL BE RESTRAINED BY DIAGONAL BRACING (MIN. 2" THICK NOMINAL LUMBER). THIS BRACING IS TO BE CONTINUOUS. PROVIDE ONE ROW OF DIAGONAL BRACING AT VERTICAL WEB MEMBERS OF TRUSSES CLOSEST TO EACH GABLE END WALL & ADDITIONAL DIAGONALS AT 20'-0" AS REQUIRED.

REVISIONS		LEONARD BUSCH ASSOCIATES CONSULTING ENGINEERS 1239 PARKWAY AVENUE, EWING, NEW JERSEY 08628 TELEPHONE: 609-771-6900 FAX: 609-771-9085		DRAWING NUMBER S2
NUMBER	DATE	COMM. NO.	FOR	
		64085	NEW BUILDING	S2
		J.H.	FOR	
		D.B.	IN HIS PRESENCE WORSHIP CENTER	
		AS NOTED	SECTIONS AND DETAILS	
		9/5/2014		